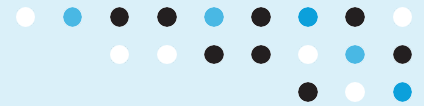


## STRATEGIC MANAGEMENT PARTNERS, SUSSEX

MEMBERS OF SUSSEX CHAMBER OF COMMERCE



### CHAMBER BUSINESS AWARDS

CELEBRATING BUSINESSES

ONE STORY AT A TIME

*“Clive has supported hundreds of these enterprises to reduce risk, develop innovations and grow employment profitably with great results.”*

Strategic Management Partners, members of Sussex Chamber of Commerce, is an independent consultancy, based in East Sussex.

Director and Founder, Clive Bonny, has been supporting low carbon innovators since 1990. His joint venture innovation projects at [www.consultsmp.com](http://www.consultsmp.com) and [www.passivpod.co.uk](http://www.passivpod.co.uk), have introduced novel low carbon construction designs to UK housing, establishing new benchmarks for best practice in sustainability. Clive’s business model is to supply SMEs with strategic innovation support, in partnership with universities, funding agencies and specialists in sustainability with unique affordability for start-ups and SMEs. Clive is a Board Advisor and Assessor of national Responsible Business Standards for the Organisation for Responsible Businesses [www.orbuk.org](http://www.orbuk.org), pioneering SME ESG standards since 2011, to achieve sustainability verifications enabling SMEs to work with larger public supply chains.

During the pandemic, the UK lost 1.5 million small enterprises through a lack of furlough support. As a result, Clive pivoted SMP services to provide free online support to start-ups and SMEs, and at [www.consult-smp.com](http://www.consult-smp.com) with video tuition on access to finance, business continuity planning, IP protection and ESG. His motto is Success Breeds Success when Values Sustain Value.

The UK relies on millions of small enterprises to thrive. Yet 75% fail within five years, losing jobs across the whole community. Clive has supported hundreds of these enterprises to reduce risk, develop innovations and grow employment profitably with great results. Clive’s focus for the future is to share with SMEs, how to develop sustainable, Responsible Business practices.

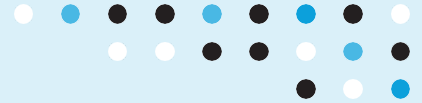
Clive’s enterprise successes are below:

- WORKPLACE - Innovating low carbon practices and processes and offering entrepreneurship for university students.
- ENVIRONMENT - Supporting UK plans for low carbon design and Net Zero innovation projects, for best practice in environmental sustainability and social value.
- MARKETPLACE - Widening online video education for ESG, IP and Business Continuity Planning and supporting [www.ORBUK.org](http://www.ORBUK.org) advisory Board for UK Social Value Act standards.
- COMMUNITY - Promoting Responsible Business standards with community leaders.
- BUSINESS PROCESSES AND CONTINUITY - Widening offers of IP and ESG training with professional and trade bodies.

(cont...)

## STRATEGIC MANAGEMENT PARTNERS, SUSSEX

MEMBERS OF SUSSEX CHAMBER OF COMMERCE



### CHAMBER BUSINESS AWARDS

CELEBRATING BUSINESSES

ONE STORY AT A TIME

*“Clive has supported hundreds of these enterprises to reduce risk, develop innovations and grow employment profitably with great results.”*

Clive has taken the lead on multiple sustainability projects, forging strong relationships with Brighton University partners and creating and protecting over 2000 enterprise jobs since 2014, with low carbon innovations, access to finance, IP protection, and business continuity planning. Clive actively led the SME community with ESG standards since 2012, supported by trade bodies and MP's.

Clive's clients win work and grow in public and private supply chains, as a result of meeting the statutory eligibility criteria of the UK Social Value Act.

